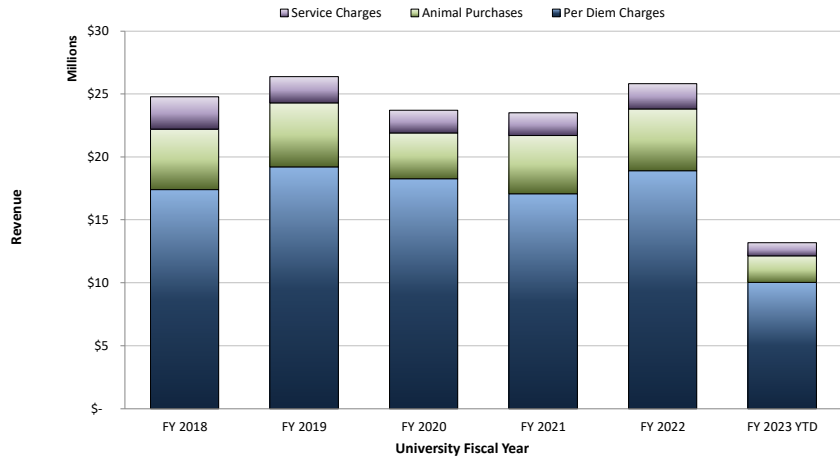


Unit for Laboratory Animal Medicine (ULAM) Metrics

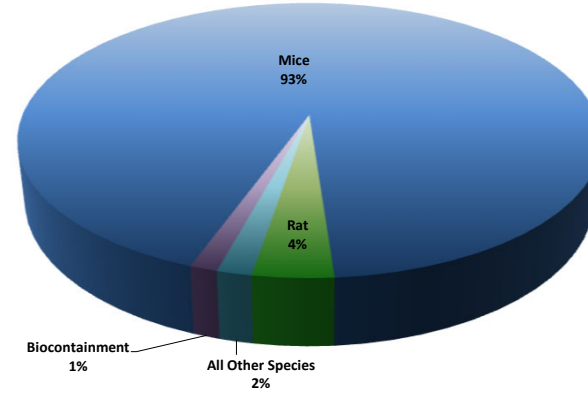
Specific Programmatic Revenues



	FY 2018	FY 2019	FY 2020	FY 2021	FY 2022	FY 2023 YTD
Per Diem Charges	\$ 17,412,703	\$ 19,204,162	\$ 18,264,464	\$ 17,072,704	\$ 18,906,771	\$ 10,027,195
Animal Purchases	\$ 4,799,115	\$ 5,095,451	\$ 3,653,468	\$ 4,641,235	\$ 4,909,748	\$ 2,113,528
Service Charges	\$ 2,578,124	\$ 2,079,131	\$ 1,782,604	\$ 1,797,654	\$ 2,011,536	\$ 1,057,048

Animal Census by Species

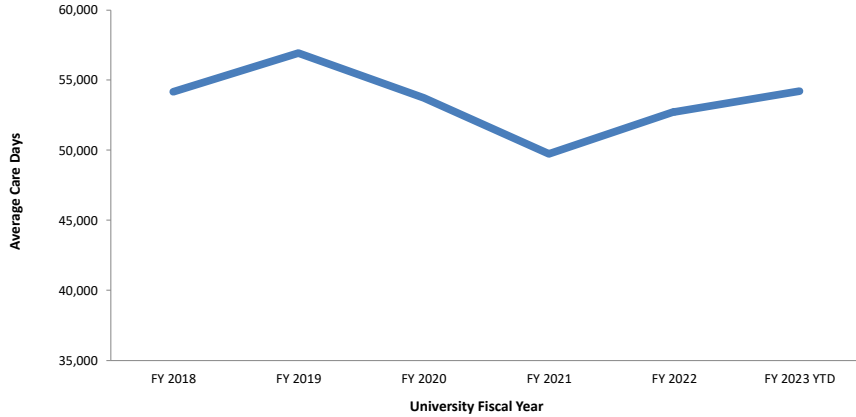
Animal Census Distribution by Species - FY 2023 YTD



	FY 2018	FY 2019	FY 2020	FY 2021	FY 2022	FY 2023 YTD
Total	19,773,565	20,785,085	19,611,933	18,161,777	19,251,504	9,924,388
Mice	18,471,918	19,552,966	18,444,984	16,953,431	17,974,406	9,258,922
Rat	845,893	780,371	752,191	671,770	725,965	374,858
All Other Species	223,553	218,307	199,099	354,208	308,809	161,995
Biocontainment	232,201	233,441	215,659	182,368	242,324	128,613

Animal Census - ULAM Total

Average Care Days



	FY 2018	FY 2019	FY 2020	FY 2021	FY 2022	FY 2023 YTD
Average Care Days	54,174	56,945	53,731	49,758	52,744	54,232