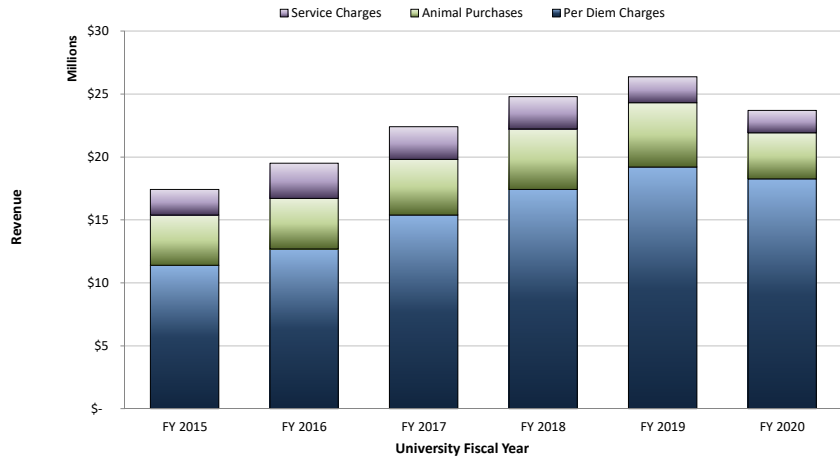


Unit for Laboratory Animal Medicine (ULAM) Metrics

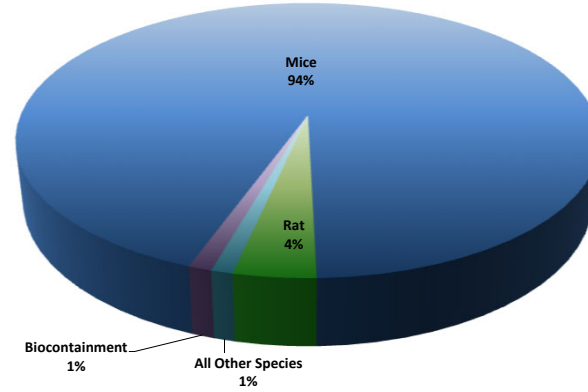
Specific Programmatic Revenues



	FY 2015	FY 2016	FY 2017	FY 2018	FY 2019	FY 2020
Per Diem Charges	\$ 11,385,950	\$ 12,681,603	\$ 15,396,135	\$ 17,412,703	\$ 19,204,162	\$ 18,264,464
Animal Purchases	\$ 3,997,885	\$ 4,022,721	\$ 4,406,390	\$ 4,799,115	\$ 5,095,451	\$ 3,653,468
Service Charges	\$ 2,044,709	\$ 2,802,356	\$ 2,587,927	\$ 2,578,124	\$ 2,079,131	\$ 1,782,604

Animal Census by Species

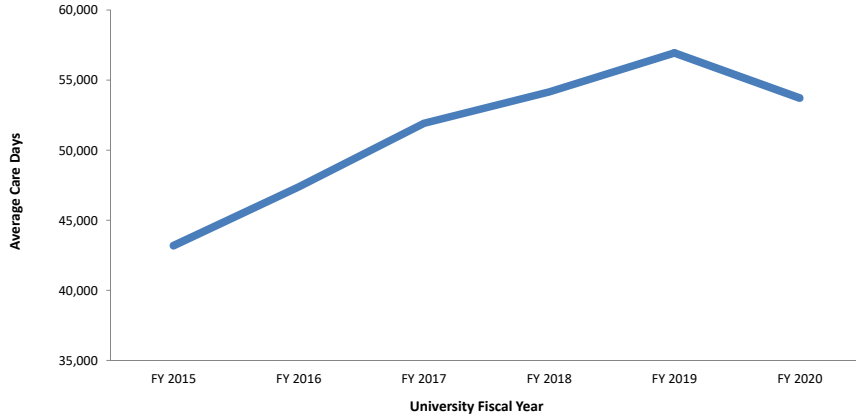
Animal Census Distribution by Species - FY 2020



	FY 2014	FY 2015	FY 2016	FY 2018	FY 2019	FY 2020
Total	15,216,055	15,766,909	17,345,970	19,773,565	20,785,085	19,611,933
Mice	14,338,802	14,836,919	16,300,626	18,471,918	19,552,966	18,444,984
Rat	648,741	648,422	752,489	845,893	780,371	752,191
All Other Species	99,183	131,093	150,001	223,553	218,307	199,099
Biocontainment	129,329	150,475	142,854	232,201	233,441	215,659

Animal Census - ULAM Total

Average Care Days



	FY 2015	FY 2016	FY 2017	FY 2018	FY 2019	FY 2020
Average Care Days	43,197	47,393	51,939	54,174	56,945	53,731