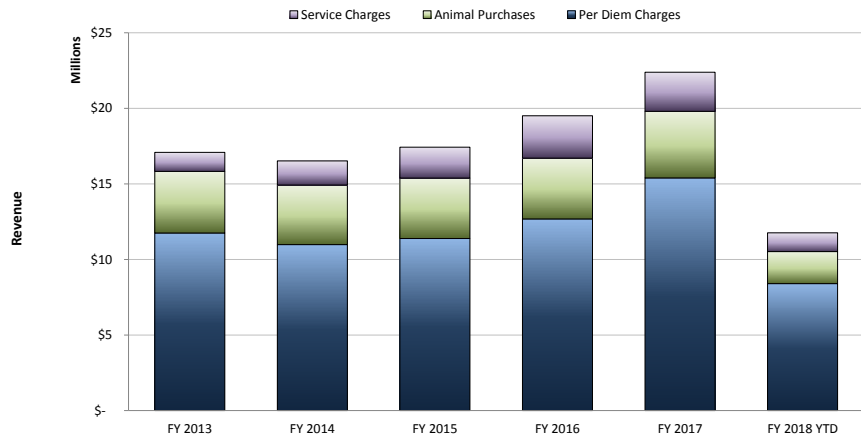


# Unit for Laboratory Animal Medicine (ULAM) Metrics

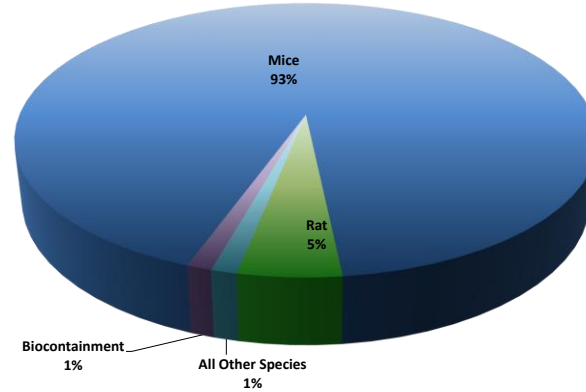
## Specific Programmatic Revenues



	FY 2013	FY 2014	FY 2015	FY 2016	FY 2017	FY 2018 YTD
Per Diem Charges	\$ 11,751,414	\$ 10,983,500	\$ 11,385,950	\$ 12,681,603	\$ 15,396,135	\$ 8,401,626
Animal Purchases	\$ 4,076,900	\$ 3,940,839	\$ 3,997,885	\$ 4,022,721	\$ 4,406,390	\$ 2,120,115
Service Charges	\$ 1,258,603	\$ 1,595,986	\$ 2,044,709	\$ 2,802,356	\$ 2,587,927	\$ 1,239,267

## Animal Census by Species

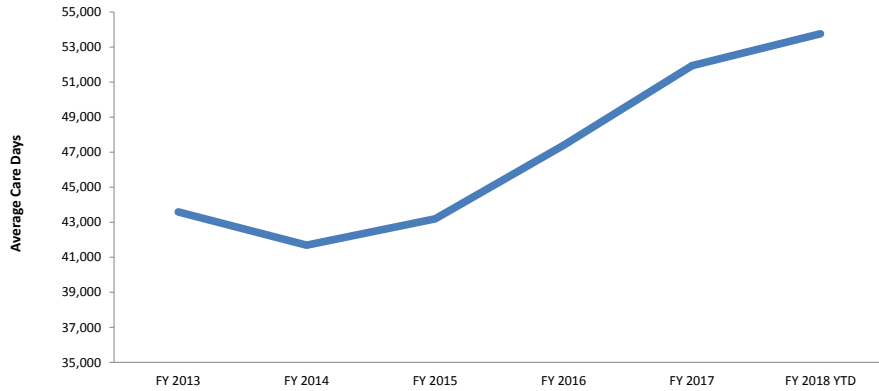
### Animal Census Distribution by Species - FY 2018 YTD



	FY 2012	FY 2013	FY 2014	FY 2015	FY 2016	FY 2018 YTD
Total	16,068,907	15,910,012	15,216,055	15,766,909	17,345,970	9,838,322
Mice	15,219,472	15,028,435	14,338,802	14,836,919	16,300,626	9,126,886
Rat	649,796	679,706	648,741	648,422	752,489	476,755
All Other Species	71,865	81,894	99,183	131,093	150,001	119,489
Biocontainment	127,774	119,977	129,329	150,475	142,854	115,192

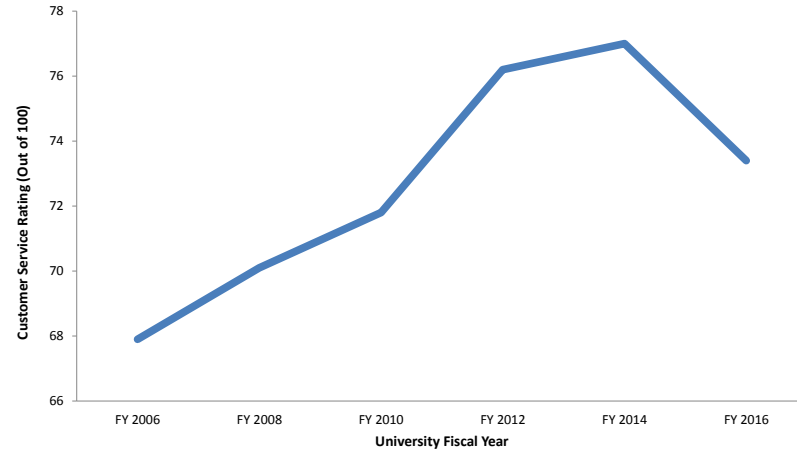
## Animal Census - ULAM Total

### Average Care Days



	FY 2013	FY 2014	FY 2015	FY 2016	FY 2017	FY 2018 YTD
Average Care Days	43,589	41,688	43,197	47,393	51,939	53,761

## Medical School Faculty Satisfaction Survey



	FY 2006	FY 2008	FY 2010	FY 2012	FY 2014	FY 2016
ULAM Customer Service Rating*	67.9	70.1	71.8	76.2	77	73.4
# of Responses (n=)	1,471	1,231	1,313	1,169	1,467	1,680

\*Based on response to "ULAM's care for your animals, considering your scientific objectives"