



CRAO

A UNIT OF THE MEDICAL SCHOOL OFFICE OF RESEARCH

Check out our website!!
<http://tinyurl.com/crao-mbect>

Access the New Platform Here:
<https://crao-mbect.umms.med.umich.edu>
Network ID: Your Uniqname, Password: Your Level-2 Password

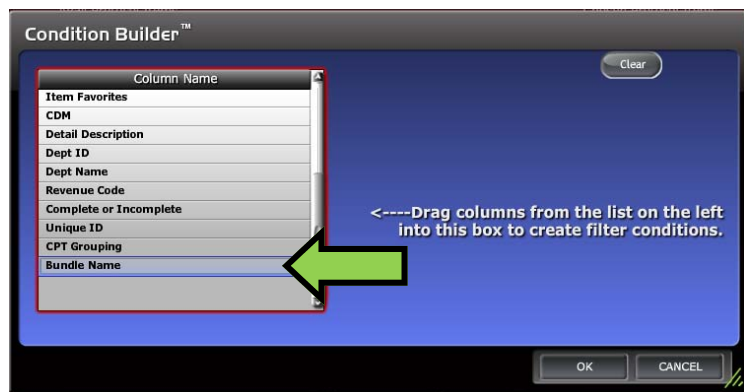
July 10, 2013 Volume 2, Issue 25

MBECT Tips and Tricks

The MBECT Team: CRAO-MBECT-HELP@med.umich.edu
or (734) 764-KNOW(5669)

Search By Bundle Name

Bundles are groups of services that frequently occur together. If you've ever tried to find a bundle and haven't been able to locate it try searching by bundle name. Scroll to the bottom of the filter list in the



"Manage Items" screen to find the "Bundle Name" option. Do you have other questions about searching for items? Sign up for our training (details below) or contact the help desk today!

Training Continues!

- **Item Search/Pricing Tool Training** : The clinical research pricing tool disappears October 2013. We have classes available to show you how to get pricing out of MBECT. Sign up here:
 - <http://tinyurl.com/MBECT-Training>
- **Financial Overview** : Ask the help desk about setting up an overview of the financial modules for your department.
- If you don't see an option that works for you **don't worry!** Contact the help desk and let us know!

Current Events



Training is still available.

Sign up to receive training in person here:
<http://tinyurl.com/MBECT-Training>
or search for keyword CRAO on the MLearning site here:
<http://mlearning.med.umich.edu/>

- We will be rescheduling our training session set for August 6th. Look for updates on the training registration page. Any users currently registered for that session will be contacted about alternative training solutions. Thank you for your understanding!

As always, we appreciate any form of feedback and would love to have your thoughts about how this style of communication works for you. Do you have topics you'd like addressed? Let us know! You can always contact our help desk at CRAO-MBECT-HELP@med.umich.edu or by calling 734-764-KNOW (5669) .

In this issue:

Search by Bundle Name	1
Current Events	1
Training Continues!	1



The Clinical Research Calendar Review & Analysis Office is part of the Office of Research, where our mission is to foster an environment of innovation and efficiency that serves the U-M Medical School community and supports biomedical science from insight to impact.