



# CRAO

A UNIT OF THE MEDICAL SCHOOL OFFICE OF RESEARCH

Check out our website!!  
<http://tinyurl.com/crao-mbect>

Access the New Platform Here:  
<https://crao-mbect.umms.med.umich.edu>  
Network ID: Your Uniqname, Password: Your Level-2 Password

June 5, 2013 Volume 2, Issue 21

## MBECT Tips and Tricks

The MBECT Team: [CRAO-MBECT-HELP@med.umich.edu](mailto:CRAO-MBECT-HELP@med.umich.edu)  
or (734) 764-KNOW(5669)

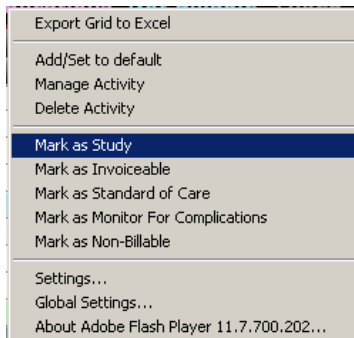
### Enrollment UPDATE!

We stated in last week's issue that enrollment information needs to be entered in MBECT with 48 hours of the subject signing the informed consent, however that information is now out of date.

Enrollment must be entered into MBECT within **24 hours** of the subject signing the informed consent. Please contact the help desk with any questions about how to enter enrollment for your trial!

### Manage Activity

It's never been easier to manage activity in your trial! From the Activity tab, left click in a cell (or use the control key to select multiple cells), then right click to bring up the menu. Choose to mark your activity with the appropriate designation and you're done!



### Training Continues!

- **Item Search/Pricing Tool Training** : The clinical research pricing tool disappears October 2013. We have classes available to show you how to get pricing out of MBECT. Sign up here:
  - <http://tinyurl.com/MBECT-Training>
- **Financial Overview** : Ask the help desk about setting up an overview of the financial modules for your department.
- If you don't see an option that works for you **don't worry!** Contact the help desk and let us know!

### Events



#### Training is still available.

Sign up to receive training in person here:  
<http://tinyurl.com/MBECT-Training>  
or search for keyword CRAO on the MLearning site here:  
<http://mlearning.med.umich.edu/>

#### Friday Workshops

- **Where** : NCRC Bldg. 10, G062B
  - **When** : This Friday's afternoon session is canceled. See you from **9 - 11 am!**
- Please remember that Friday workshops are a supplement rather than a replacement for a training class.

As always, we appreciate any form of feedback and would love to have your thoughts about how this style of communication works for you. Do you have topics you'd like addressed? Let us know! You can always contact our help desk at [CRAO-MBECT-HELP@med.umich.edu](mailto:CRAO-MBECT-HELP@med.umich.edu) or by calling 734-764-KNOW (5669) .

#### In this issue:

Enrollment Update	1
Manage Activity	1
Training Continues!	1
Events	1



OFFICE OF RESEARCH

The Clinical Research Calendar Review & Analysis Office is part of the Office of Research, where our mission is to foster an environment of innovation and efficiency that serves the U-M Medical School community and supports biomedical science from insight to impact.