



# CRAO

A UNIT OF THE MEDICAL SCHOOL OFFICE OF RESEARCH

Check out our website!!  
<http://tinyurl.com/crao-mbect>

Access the New Platform Here:  
<https://crao-mbect.umms.med.umich.edu>  
Network ID: Your Uniqname, Password: Your Level-2 Password

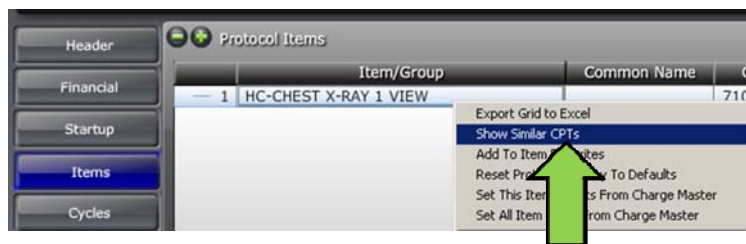
April 24, 2013 Volume 2, Issue 15

## MBECT Tips and Tricks

The MBECT Team: [CRAO-MBECT-HELP@med.umich.edu](mailto:CRAO-MBECT-HELP@med.umich.edu)  
or (734) 764-KNOW(5669)

### Need to add a PC or an HC?

As billing guidelines change there is sometimes a need to go back and add the PC or the HC component of a charge you already have on your calendar. This has never been easier than in the new system! Go to the Items tab, highlight your item by left clicking and then right click to bring up the menu. Choose "Show Similar CPT" to see any other charge with the same CPT code to save valuable time!



### Training Continues!

The new financial modules are slated for release on **May 6th**. We listened to your feedback and the financial modules offer a lot of flexibility to track the entire life cycle of a trial from pre- to post-award status. Because of this, there is some additional responsibility to understand how the various modules interrelate and as such any users requesting access to the financial modules will be **required** to attend a training class before access can be granted. **Training begins next week!**

- **Hands-on Training** : In-person training sessions are offered for just Visit Management as well as for all of the financial modules together to help maximize your time. Sign up on our website:
  - <http://tinyurl.com/MBECT-Training>
- If you don't see an option that works for you **don't worry!** Contact the help desk and let us know!

### Events



#### Training is still available.

Sign up to receive training in person here:  
<http://tinyurl.com/MBECT-Training>  
or search for keyword CRAO on the MLearning site here:  
<http://mlearning.med.umich.edu/>

- **Friday Workshops**
  - **Where** : NCRC Bldg. 10, G062B
  - **When** : This week there is no morning session! See you from 1-4 pm.
- **Clinical Research Billing Town Hall**
  - **Where** : CVC Danto Auditorium
  - **When** : Friday May 24th, 2013 from 2:00 PM - 3:00 PM

As always, we appreciate any form of feedback and would love to have your thoughts about how this style of communication works for you. Do you have topics you'd like addressed? Let us know! You can always contact our help desk at [CRAO-MBECT-HELP@med.umich.edu](mailto:CRAO-MBECT-HELP@med.umich.edu) or by calling 734-764-KNOW (5669) .

#### In this issue:

Adding PC or HC Components	1
Training Continues!	1
Events	1



The **Clinical Research Calendar Review & Analysis Office** is part of the Office of Research, where our mission is to foster an environment of innovation and efficiency that serves the U-M Medical School community and supports biomedical science from insight to impact.