



FLOW CYTOMETRY CORE

UNIVERSITY OF MICHIGAN MEDICAL SCHOOL

The Flow Cytometry Core provides instrumentation and expertise to the biotech community in a broad range of basic and medical science disciplines. Samples are prepared by individual investigators, who then deliver samples to the Core for flow cytometric analysis or cell sorting. The Core also provides assistance in grant and publication preparation, publication-quality graphics, and development of experimental designs.

Core Services

- Flow cytometry analysis
- Cell sorting
- Experimental design
- Application development
- Data storage
- Grant application support
- Publication development
- Graphics presentations

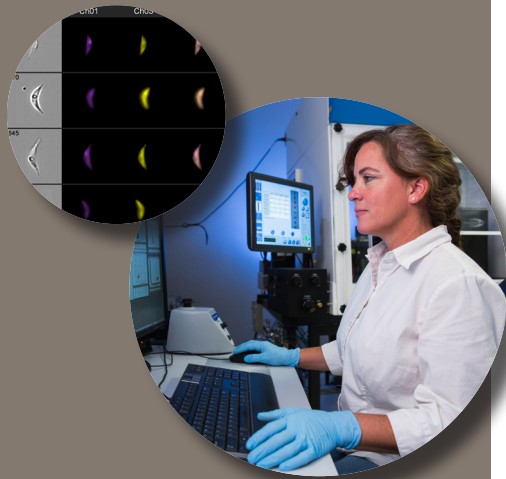
Preparing Samples

Investigators prepare samples in their individual laboratories. These samples are delivered to the lab at or before the scheduled appointment time with a completed sample form. Facility personnel are always available to advise investigators regarding optimal sample preparation for various applications, and can also provide copies of procedures and/or relevant journal articles to assist in development of techniques. Investigators unfamiliar with new techniques should consult with the Core manager regarding staining protocols and necessary control samples.

First-time investigators must consult with the Core manager concerning facility-operating policies, and to discuss projects pursuant to optimizing experimental design, sample preparation, appropriate controls, and containment of potential pathogens. The Core cannot accept potentially pathogenic samples for cell sorting. If you have questions regarding viable human/primate samples or lentivirus-treated samples, please consult with the Core manager.

Instrumentation and Analysis

For a listing of possible measurements, instrumentation used at the Core, analysis software and technology, please visit the Core website: research.med.umich.edu/flowcytometry. For specific detector information and panel design on core instrumentation, please visit umich.fluorofinder.com. Development of new applications is also encouraged.



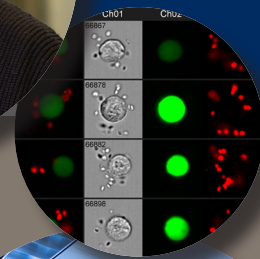
Flow Cytometry Core

Biomedical Research Core Facilities

Comprehensive Cancer Center • Rm 7416 & 7410
1500 E. Medical Center Drive
Ann Arbor, MI 48109-5946

“Whether you need assistance in development of experimental designs, cell sorting techniques, or grant and publication preparation, the Flow Cytometry Core has the instrumentation and expertise to help. I am always excited by the opportunity to introduce investigators to this powerful technique!”

—David Adams, Manager, Flow Cytometry Core



Training Opportunities

No training is required to bring samples to the facility to be run by our trained technicians. However, we do offer training on all Core instrumentation for those users wanting to take advantage of the discounted rate for self-operation or for those wanting to utilize the equipment during the off-hours.

The training consists of two steps. The first is a mandatory lecture, which is held monthly; reserve your spot by contacting the Core staff.

Following the lecture, analyzer users may schedule for a two-hour, hands-on training session on any analyzer of their choice. Additional training time is also available. Those requesting cell sorter training must first demonstrate a marked aptitude in flow cytometry and analyzer operation.

Cost Estimates and Billing

The Core operates on a fee-for-service basis. For current prices and hours, please visit the Flow Cytometry website at: research.med.umich.edu/flowcytometry.

Connect with Us

The Flow Cytometry Core has four convenient locations across the University of Michigan Ann Arbor campus. Appointments with the Core can be scheduled directly from your desktop at umich.corefacilities.org. If you have any questions, please contact Core Manager Dave Adams at 734-764-8107 or davadams@umich.edu.

Comprehensive Cancer Center

Hours: Monday-Friday 9 a.m. – 9 p.m.
Phone: 734-647-3216
Fax: 734-936-7376
Rooms 7416 and 7410
E. Medical Center Drive
Ann Arbor, MI 48109-0944

Life Sciences Institute

Hours: Monday-Friday 9 a.m. – 3 p.m.
Phone: 734-615-9643
Room 3222
210 Washtenaw Avenue
Ann Arbor, MI 48109-2216

Biomedical Science Research Building

Hours: Monday-Friday 9 a.m. – 5 p.m.
Phone: 734-615-3494
Room A701
109 Zina Pitcher Drive
Ann Arbor, MI 48109-2200

North Campus Research Complex

Hours: Monday-Friday 9 a.m. – 5 p.m.
Phone: 734-763-5792
Room 134D, Building 20W
2800 Plymouth Road
Ann Arbor, MI 48109-2800



About the BRCF

The Flow Cytometry Core was founded in 1984 and is member of the Biomedical Research Core Facilities (BRCF). Part of the University of Michigan Medical School Office of Research, the BRCF is a collection of centralized labs and services offering state-of-the-art instruments, resources and expertise to biomedical researchers, investigators and educators.

For more information on the BRCF, visit research.med.umich.edu/brcf

Biomedical Research Core Facilities
University of Michigan Medical School
2570 MSRB II • 1150 W. Medical Center Drive
Ann Arbor, MI 48109-0674
734-647-4776
brcf-umms@umich.edu